

Papai Noel está vindo para a cidade

Clarinete

$\text{♩} = 136$

5

7

9

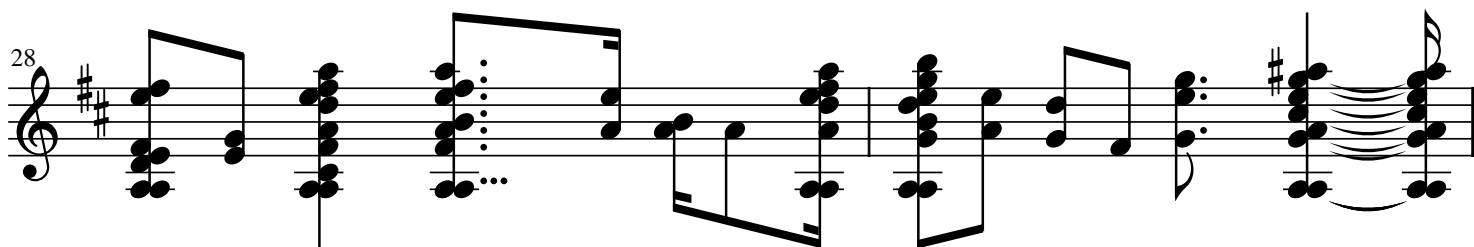
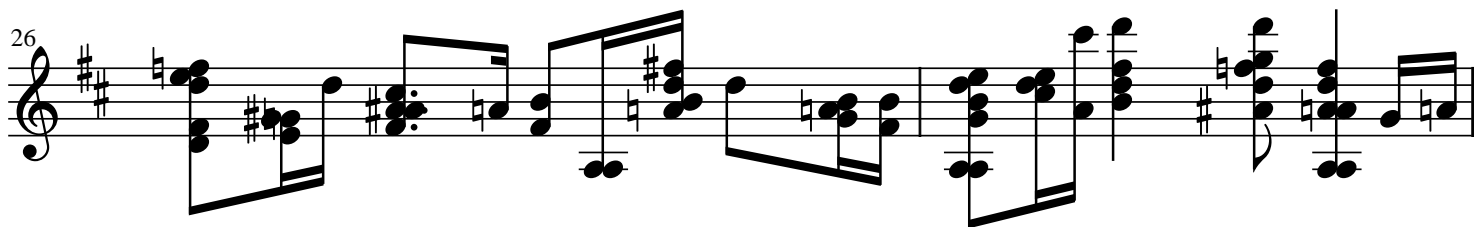
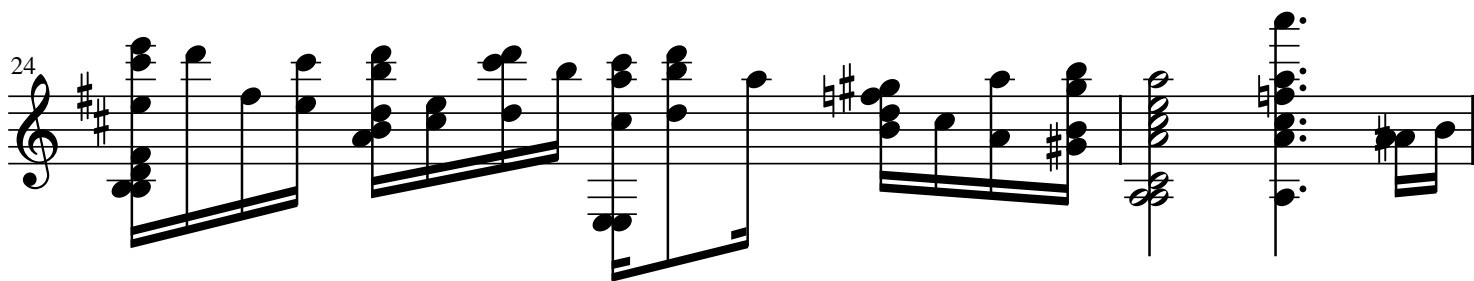
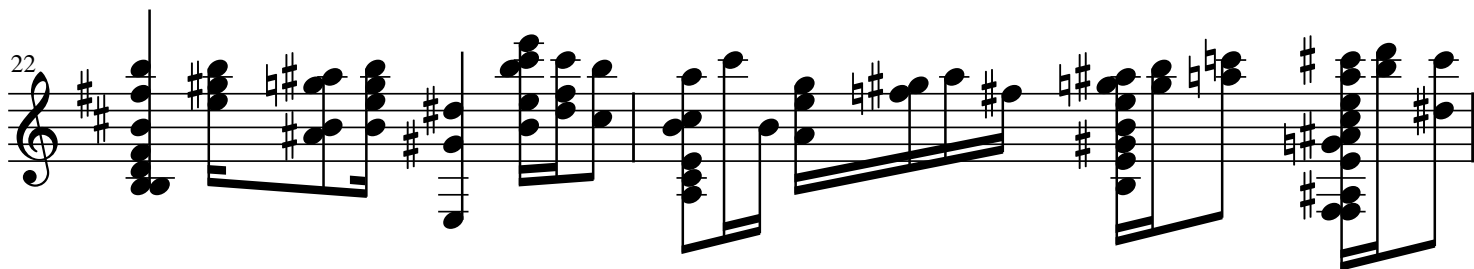
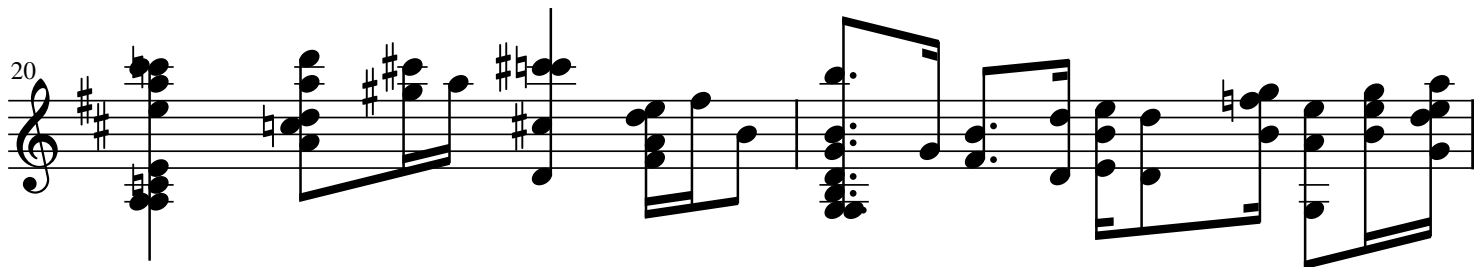
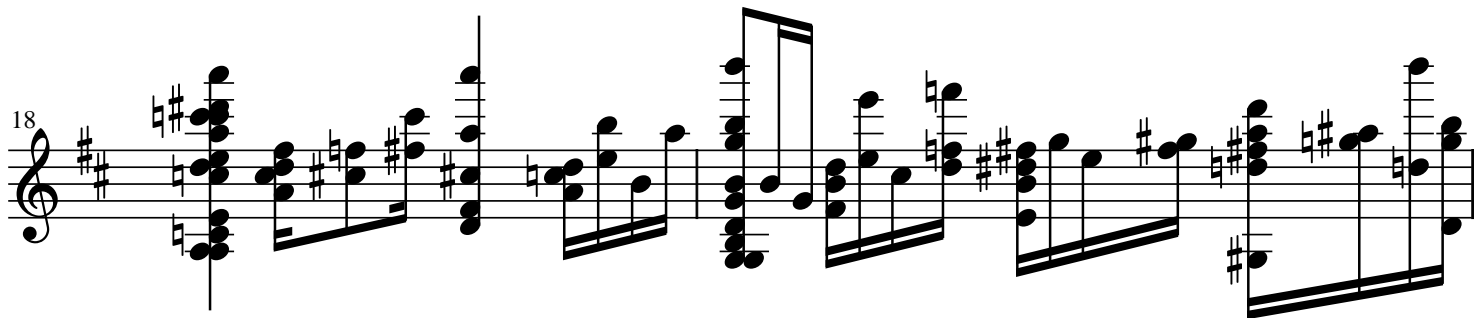
11

12

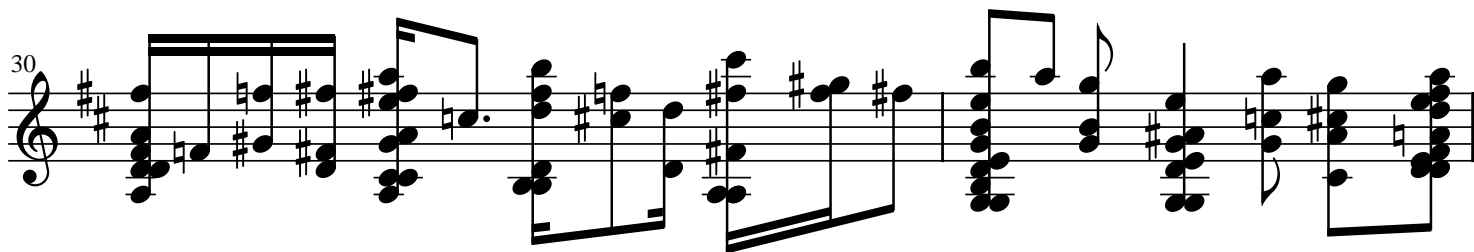
14

15

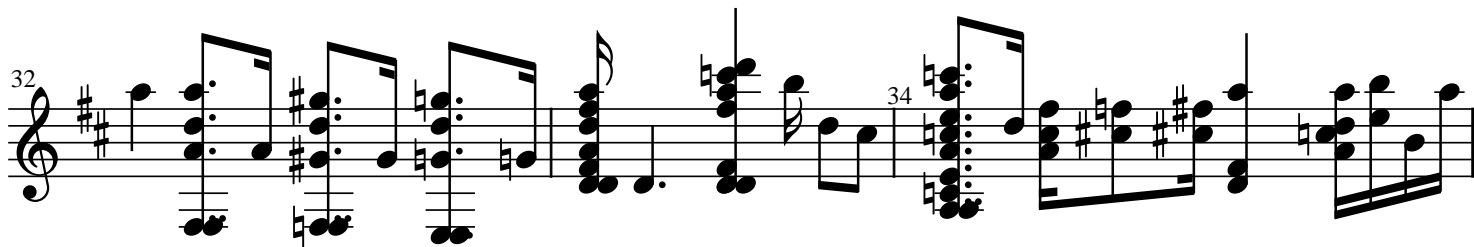
17



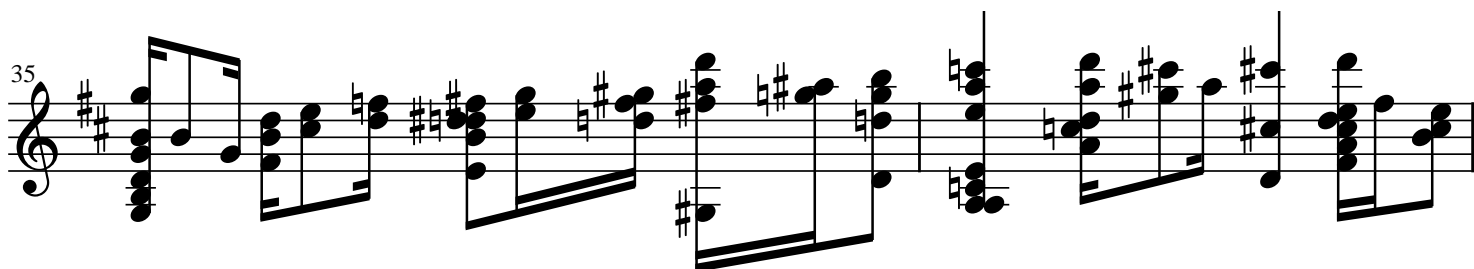
30



32



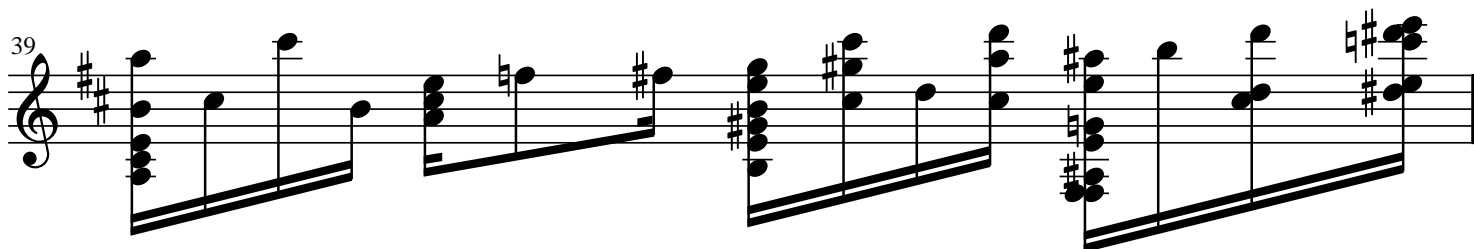
35



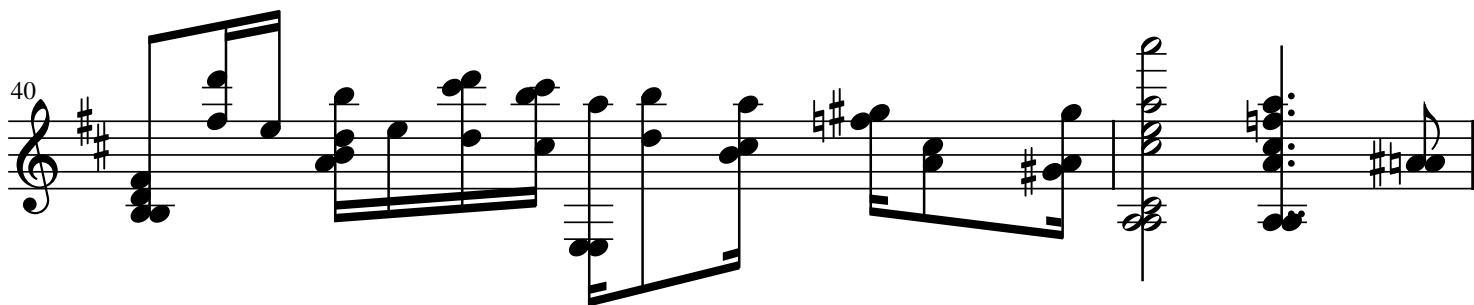
37



39



40



42

Staff 42-43: Treble clef, key of D major (two sharps). The staff contains two measures. Measure 42 features a series of eighth and sixteenth notes, some beamed together, with a dotted quarter note. Measure 43 continues the melodic line with similar rhythmic values and includes a triplet of eighth notes.

44

Staff 44-45: Treble clef, key of D major. The staff contains two measures. Measure 44 has a complex texture with many beamed eighth and sixteenth notes, some with dots. Measure 45 continues with similar fast-moving passages and includes a triplet of eighth notes.

46

Staff 46-47: Treble clef, key of D major. The staff contains two measures. Measure 46 features a series of beamed eighth and sixteenth notes. Measure 47 continues the melodic line with similar rhythmic values and includes a triplet of eighth notes.

48

Staff 48-50: Treble clef, key of D major. The staff contains three measures. Measure 48 has a series of beamed eighth and sixteenth notes. Measure 49 continues the melodic line with similar rhythmic values. Measure 50 features a long horizontal line, indicating a rest or a specific performance instruction, with the number 50 written above it.

50

6